

EDITION 2018 EN

FABRICS CATALOGUE

selt⁺
sun
protection
systems

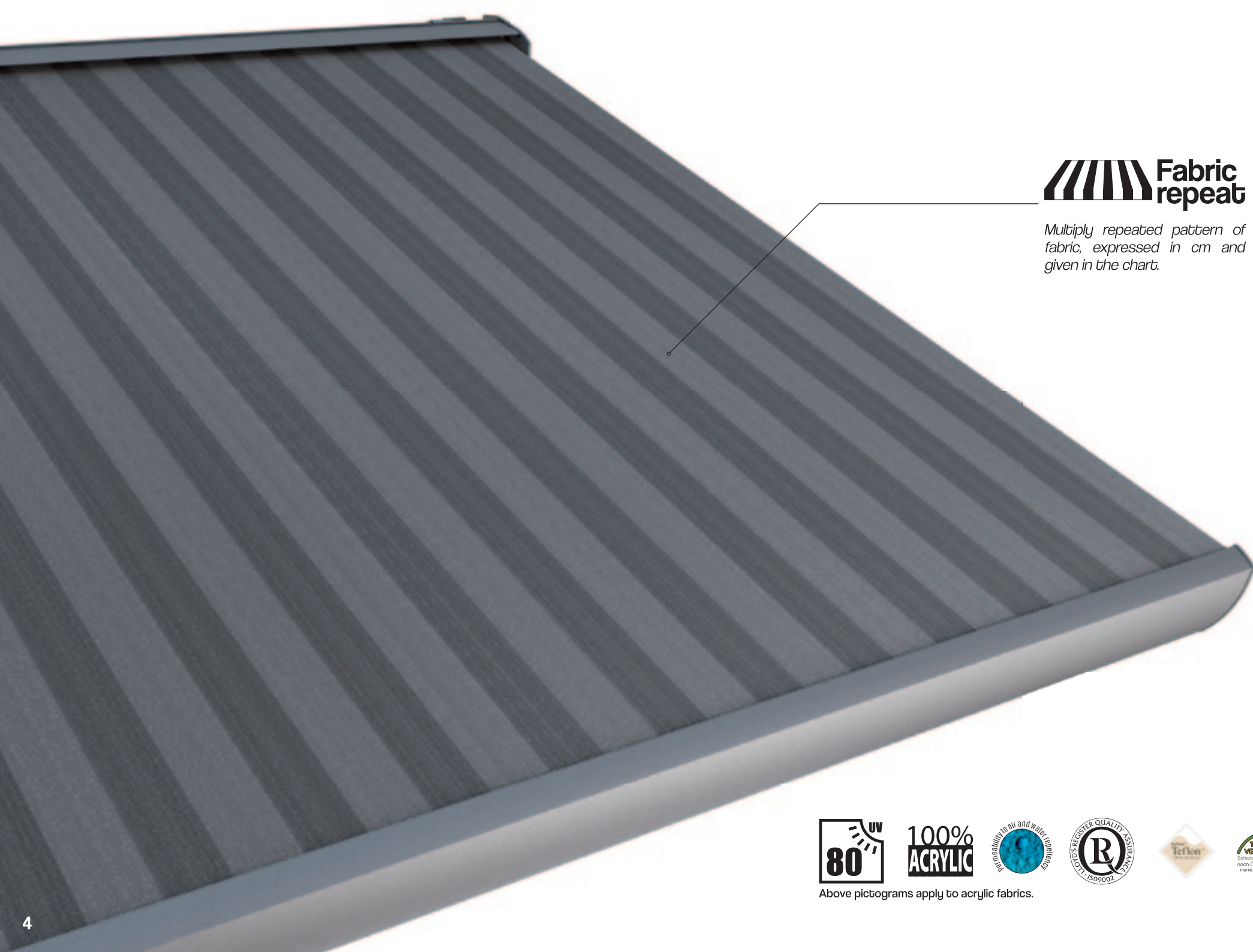
table of **contents**

awning fabrics	3
solid awning fabrics.....	6
waterproof awning fabrics.....	12
orchestra awning fabrics.....	13
urban / landscape mini awning fabrics.....	14
landscape awning fabrics.....	15
classical / fantasy awning fabrics.....	16
screen fabrics	21
pergola solid fabrics	29

awning

fabrics





 **Fabric repeat**

Multiply repeated pattern of fabric, expressed in cm and given in the chart.



**100%
ACRYLIC**

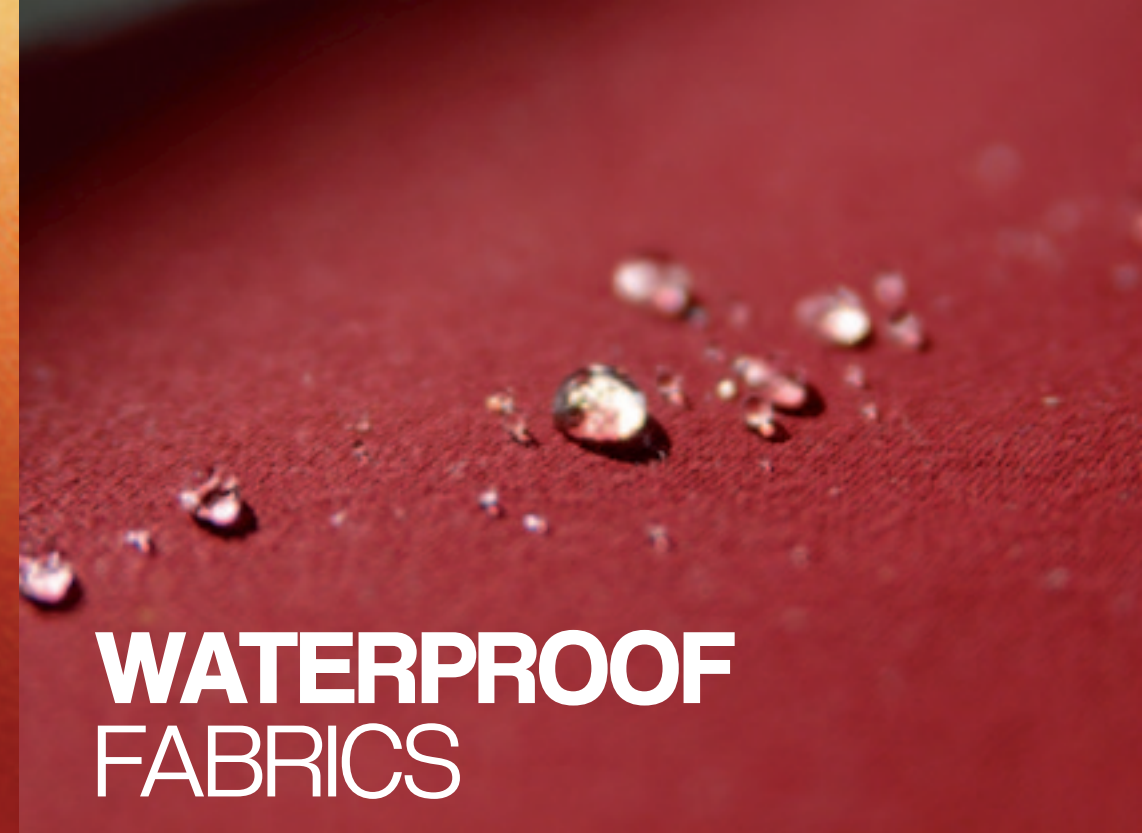


Above pictograms apply to acrylic fabrics.

ACRYLIC FABRICS

Technical data shown below are average values of the current production Die angegebenen technischen Daten sind Durchschnittswerte der laufenden Produktion Les données techniques ci-dessous sont des valeurs moyennes de la production courante		SOLID	
Fabric Gewebe Tissu		Acrylic 100%, solution dyed Acryl 100%, spinnfärbungsfärbt Acrylique, 100% teint masse	
Finishing Ausrüstung Traitement		Teflon - Cleangard	
Weight Gewicht Poids total	DIN EN 12127	~ 300 g/m ²	
Width Warenbreite Laize		120 cm	
Colour fastness Farblichkeit Solidité des coloris	DIN EN ISO 105-B02	7-8 / 8	
Oil repellency Ölabweisung Oleofugation	EN ISO 14419	4-5	
Water repellency Wasserabweisung Résistance au mouillage superficiel	EN ISO 4920	100	
Water column Wassersäule Colonne d'eau	EN 20 811	~ 330 mm	
Tensile strength (daN/5 cm) Höchstzugkraft (daN/5 cm) Résistance à la rupture (daN/5 cm)	DIN EN ISO 13934-1	~ 140 / 95	
Tear resistance (daN) Weft / Warp Weißerreißkraft (daN) Schuss / Kette Résistance à la déchirure (daN) Trame / Chaîne	EN ISO 13973-2	23 / 4	

Acrylic fabrics guarantee the highest quality of the product, providing thermal comfort and protection against UV radiation. Made 100% out of acrylic fibre, dyed in chemical solution, provide excellent protection against colour loss. UV resistance coefficient is 7-8 at 8° scale. Impregnation with use of TEFLON® or SCOTCHGARD™ agents provides an excellent protective barrier and strengthens water-repellent qualities of the fabric, also preventing dirt adhering. Resistance to leaking: 330 mm water column. The advantage of acrylic fabric is also high resistance to tensile and tear. Permeability to air and water repellency Above pictograms apply to acrylic fabrics.

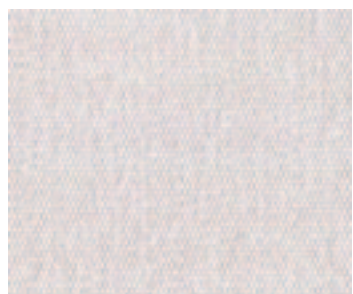


WATERPROOF FABRICS

Technical data shown below are average values of the current production Die angegebenen technischen Daten sind Durchschnittswerte der laufenden Produktion Les données techniques ci-dessous sont des valeurs moyennes de la production courante		WATERPROOF	
Fabric Gewebe Tissu		Acrylic 100%, solution dyed Acryl 100%, spinnfärbungsfärbt Acrylique, 100% teint masse	
Finishing Ausrüstung Traitement		Teflon - Cleangard	
Weight Gewicht Poids total	DIN EN 12127	~ 330 g/m ²	
Width Warenbreite Laize		120 cm	
Colour fastness Farblichkeit Solidité des coloris	DIN EN ISO 105-B02	7-8 / 8	
Oil repellency Ölabweisung Oleofugation	EN ISO 14419	4-5	
Water repellency Wasserabweisung Résistance au mouillage superficiel	EN ISO 4920	100	
Water column Wassersäule Colonne d'eau	EN 20 811	~ 1000 mm	
Tensile strength (daN/5 cm) Höchstzugkraft (daN/5 cm) Résistance à la rupture (daN/5 cm)	DIN EN ISO 13934-1	~ 140 / 95	
Tear resistance (daN) Weft / Warp Weißerreißkraft (daN) Schuss / Kette Résistance à la déchirure (daN) Trame / Chaîne	EN ISO 13973-2	3 / 4	

Waterproof acrylic fabrics are characterized by increased resistance to leaking - more than 800 mm water column. Weave structure together with modern impregnation technology provides high air permeability even on hot days. Oeko-Tex® guarantees that offered acrylic fabrics, subjected to special impregnation for water resistance, are not toxic.

SOLID

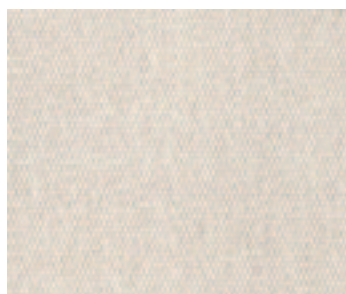


BLANCO

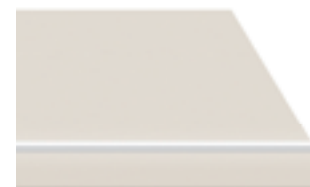


2042

UV: 97% G_{bot}: 18%

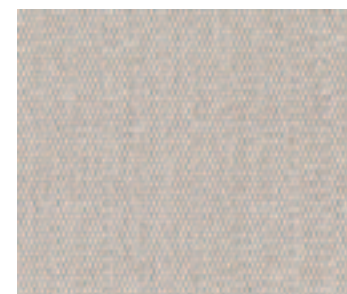


NATURAL



2929

UV: 97% G_{bot}: 18%



MARFIL



2143

UV: 97% G_{bot}: 16%

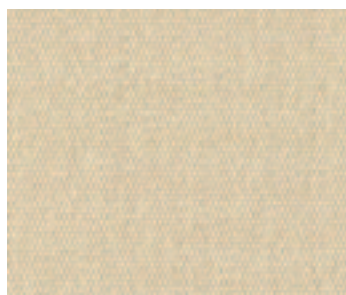


SIROCO



2226

UV: 98% G_{bot}: 12%



VANILLA



2687

UV: 97% G_{bot}: 17%

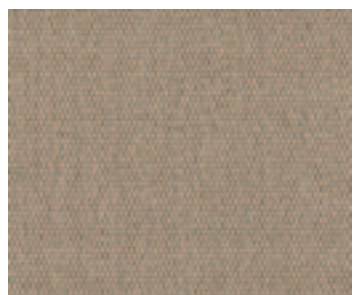


**AMBER
BEIGE**



0814

UV: 99% G_{bot}: 15.66%



BEIGE



2038

UV: 99% G_{bot}: 11%

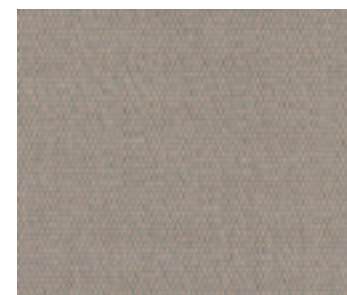


INTEGRAL



2838

UV: 99% G_{bot}: 8%



AVENA



2296

UV: 98% G_{bot}: 11%

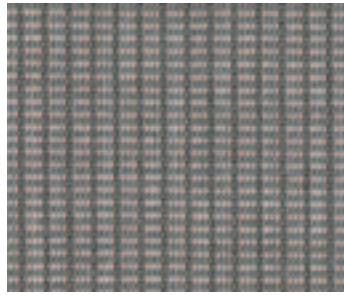


MINERAL



2831

UV: 99% G_{tot}: 7%



MARBLE



0923

UV: 99% G_{tot}: 12.8%



**MULTICO
FLAME**



7131

UV: 90% G_{tot}: 17%

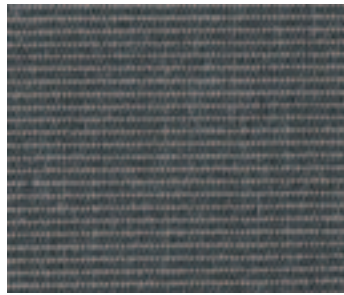


**NUAGES
FLAME**



6319

UV: 90% G_{tot}: 16%



**TWEED
ROCK**



7151

UV: 98% G_{tot}: 11%

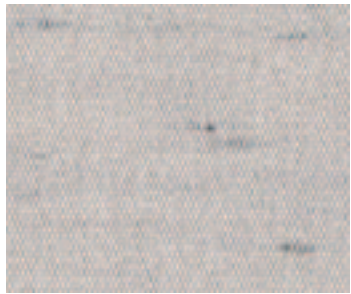


CAFE



2316

UV: 99% G_{tot}: 5%

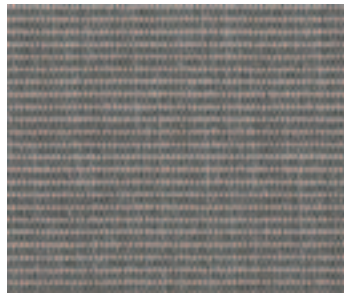


BERNA



2041

UV: 97% G_{tot}: 16%



**TWEED
LATTE**



7926

UV: 98% G_{tot}: 15%

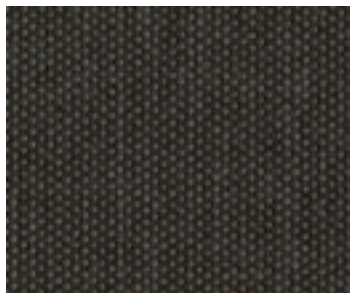


VISION



2250

UV: 99% G_{tot}: 7%

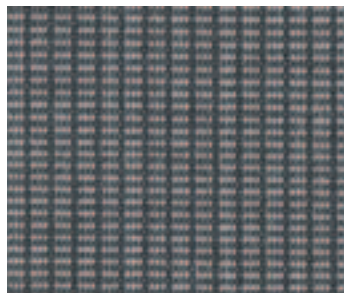


**CHAUME
FIGUE**



U235

UV: 100% G_{tot}: 9%

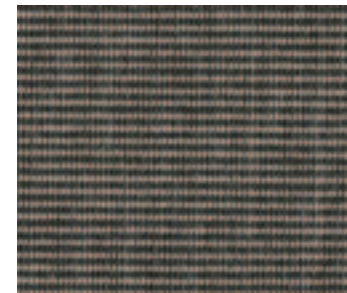


IRON

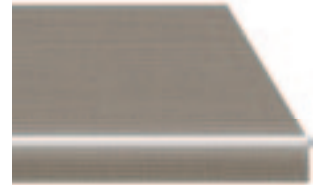


0937

UV: 99% G_{tot}: 6.57%



**TWEED
BROWN**



0403

UV: 99% G_{tot}: 6.82%



**LIN
MELANGE**



8904

UV: 95% G_{tot}: 11%

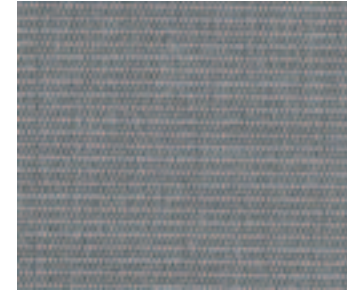


SNOWFLAKE



3463

UV: 95% G_{tot}: 22%



**TWEED
ARGENT**



0794

UV: 98% G_{tot}: 19%



**DARK
LINEN**



6727

UV: 98% G_{tot}: 18%



**SILVER
WHITE**



0364

UV: 99% G_{tot}: 7.67%

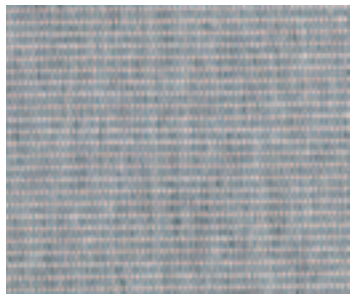


SILVER



2821

UV: 97% G_{tot}: 13%



**SILVER
GREY**



U190

UV: 90% G_{tot}: 15%



**SILVER
MELANGE**



0028

UV: 99% G_{tot}: 7.36%

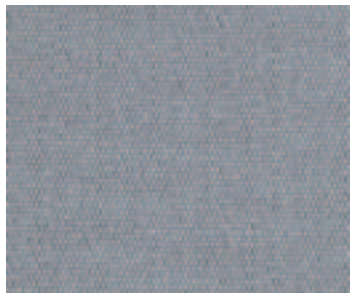


**STITCH
ANDESITE**



0512

UV: 98% G_{tot}: 8%

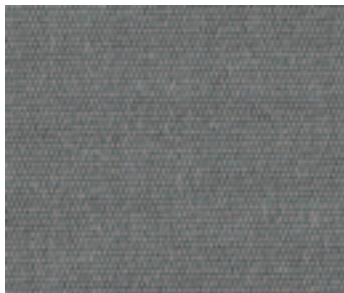


PERLA



2979

UV: 97% G_{tot}: 8%



**PIETRA
BEIGE**



9415

UV: 98% G_{tot}: 8%



ZINC



2802

UV: 99% G_{tot}: 11%

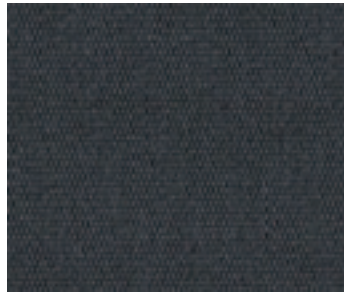


ASH



0638

UV: 99% G_{tot}: 5.05%



ANTRACITA



8488

UV: 99% G_{tot}: 6%

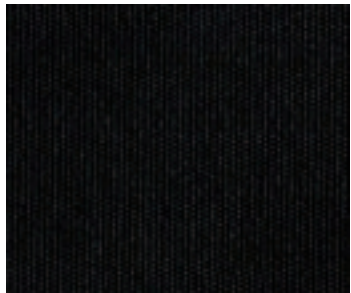


EBONY TWEED



7324

UV: 98% G_{tot}: 10%



NEGRO



2170

UV: 99% G_{tot}: 5%

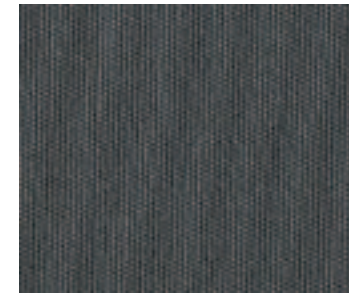


GRAPHITE ZIP



1524

UV: 98% G_{tot}: 12%



BASALT



8203

UV: 100% G_{tot}: 5%

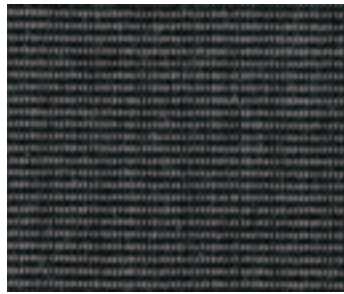


FLANELLE



U104

UV: 100% G_{tot}: 5%

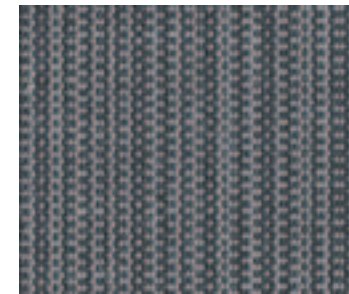


CHARCOAL TWEED



0402

UV: 99% G_{tot}: 5%



ZIP GREY



1597

UV: 98% G_{tot}: 13%



STITCH CALCITE



0505

UV: 98% G_{tot}: 9%

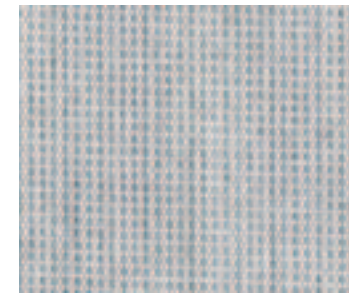


PLATINUM



0715

UV: 90% G_{tot}: 12%



WHITE LINEN



8615

UV: 95% G_{tot}: 18%



BREEZE



2777

UV: 99% G_{tot}: 6%



AZUL



2018

UV: 99% G_{tot}: 7%



MARINE



2145

UV: 99% G_{tot}: 5%



**PIMENT
FIGUE**



U412

UV: 100% G_{tot}: 10%



**BRIGHT
RED**



2211

UV: 99% G_{tot}: 10%

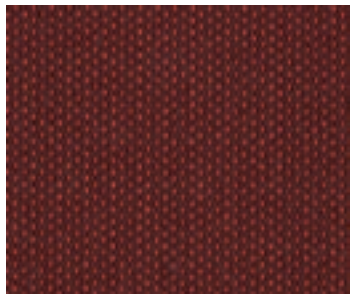


RIOJA



2210

UV: 99% G_{tot}: 8%

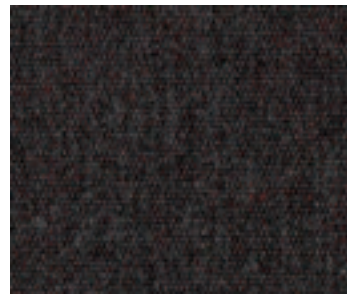


**CARMIN
FIGUE**



U411

UV: 100% G_{tot}: 10%



**SWITCH
ROGUE**



U390

UV: 100% G_{tot}: 8%

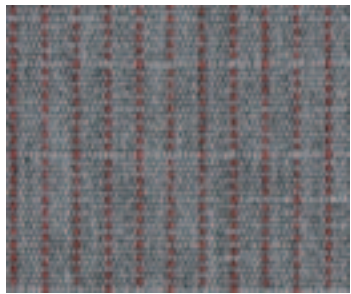


GRANATE

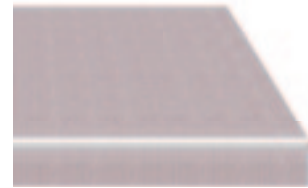


2101

UV: 99% G_{tot}: 6%

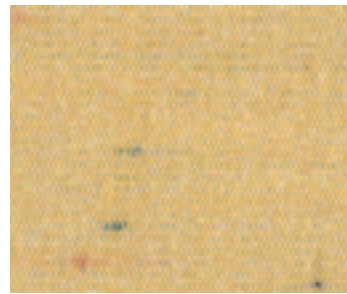


**STITCH
RUBY**



0507

UV: 98% G_{tot}: 9%



**MARSEILLE
FLAME**



8854

UV: 100% G_{tot}: 11%



AMARILLO



2013

UV: 99% G_{tot}: 15%

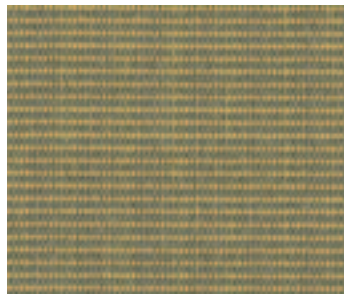


ORANGE



2050

UV: 99% G_{bot}: 13%



**TWEED
SENAPE**



0034

UV: 99% G_{bot}: 6.3%

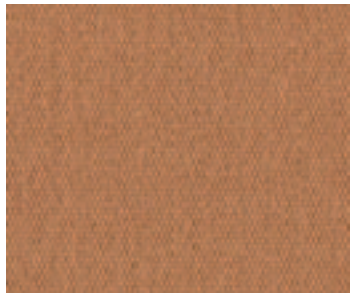


CURRY



U105

UV: 100% G_{bot}: 12%

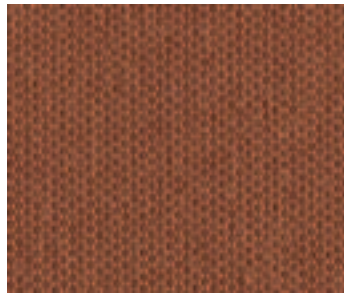


OCRE



2180

UV: 99% G_{bot}: 13%



**POTIRON
FIGUE**



U413

UV: 100% G_{bot}: 10%

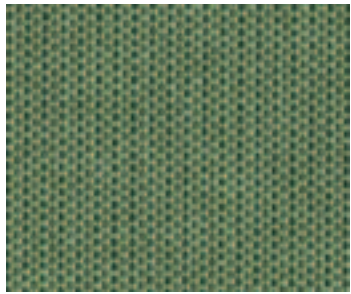


**MELEZE
FIGUE**



U417

UV: 100% G_{bot}: 8%



JADE



0396

UV: 99% G_{bot}: 8.12%



**VERDE
BOTELLA**



2245

UV: 99% G_{bot}: 6%



**SWITCH
EMPIRE**



U393

UV: 100% G_{bot}: 8%

WATERPROOF

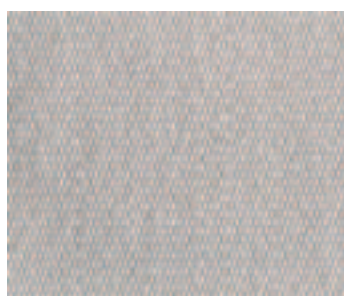


BLANCO



8268

UV: 97% G_{bot}: 18%

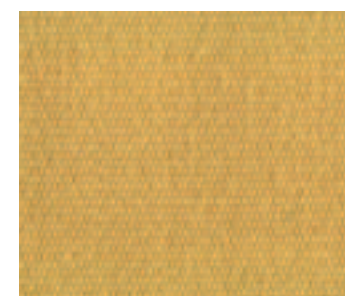


MARFIL



8272

UV: 97% G_{bot}: 16%



AMARILLO

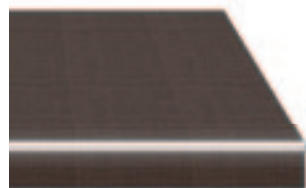


8265

UV: 99% G_{bot}: 15%

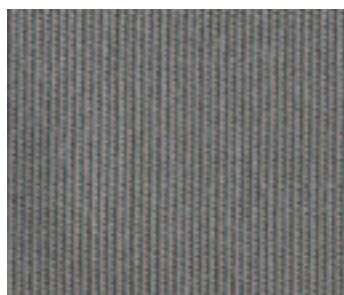


COCO



2047

UV: 99% G_{bot}: 9%

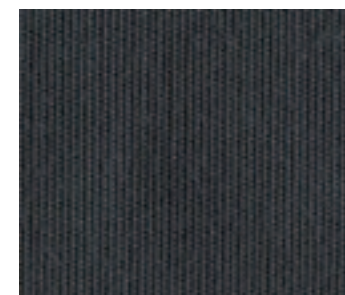


GRIS



8271

UV: 99% G_{bot}: 7%

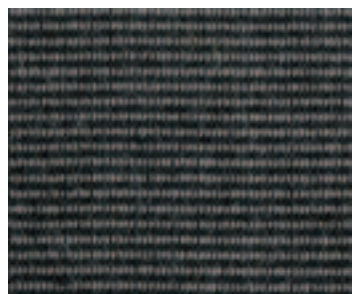


ANTRACITA



2796

UV: 99% G_{bot}: 6%

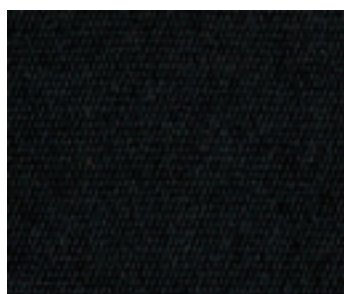


**TWEED
NEGRO**



2085

UV: 99% G_{bot}: 6%



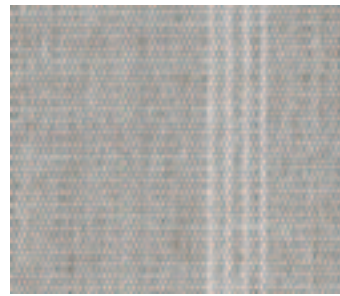
NEGRO



8275

UV: 99% G_{bot}: 5%

ORCHESTRA

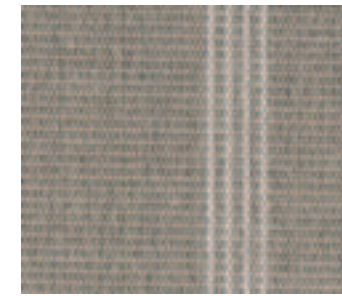


**NAPLES
LINEN**



D307

UV: 95% G_{tot}: 13% REPEAT: 20 cm

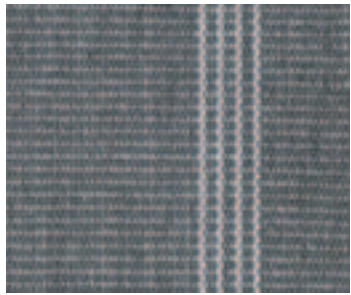


**NAPLES
HEATHER**

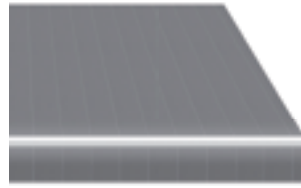


D305

UV: 90% G_{tot}: 11% REPEAT: 20 cm

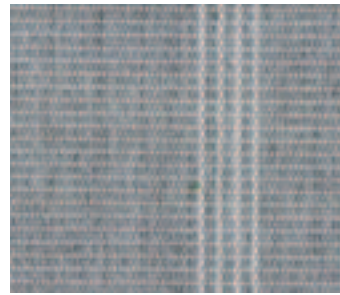


**NAPLES
STONE**

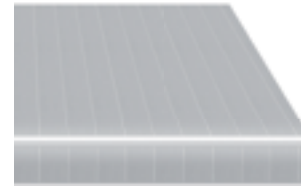


D113

UV: 95% G_{tot}: 7% REPEAT: 20 cm

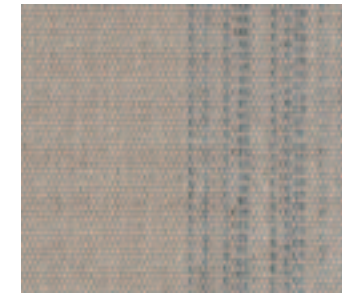


**NAPLES
LIGHT GREY**



D304

UV: 90% G_{tot}: 11% REPEAT: 20 cm

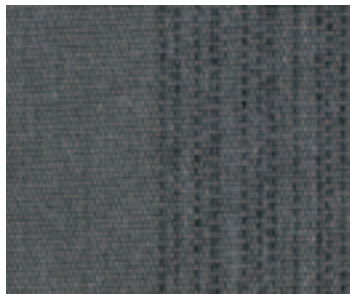


**PENCIL
BEIGE**

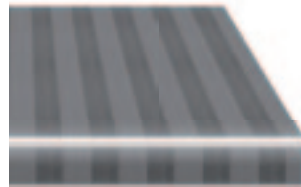


D324

UV: 95% G_{tot}: 14% REPEAT: 30 cm



**PENCIL
DARK GREY**



D319

UV: 100% G_{tot}: 8% REPEAT: 30 cm



**PENCIL
GREY**



D320

UV: 95% G_{tot}: 14% REPEAT: 30 cm



**PENCIL
YELLOW**



D323

UV: 95% G_{tot}: 13% REPEAT: 30 cm

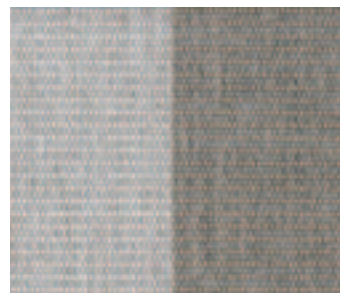


**WIDE CHINA
GREEN**



D299

UV: 95% G_{tot}: 10% REPEAT: 60 cm

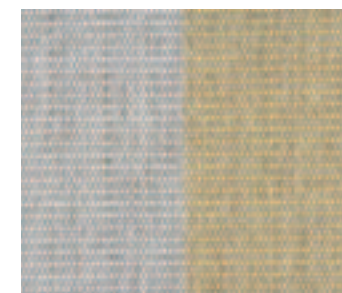


**WIDE CHINA
BEIGE**



D301

UV: 95% G_{tot}: 12% REPEAT: 60 cm



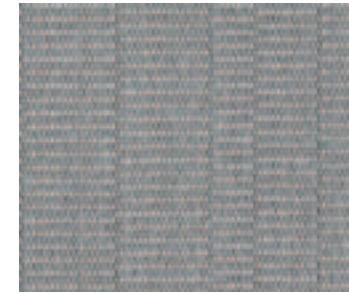
**WIDE CHINA
YELLOW**



D300

UV: 95% G_{tot}: 13% REPEAT: 60 cm

URBAN

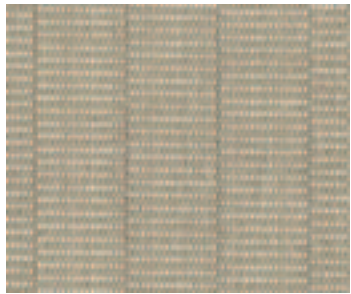


CONCRETE



0993

UV: 99% G_{bot}: 10.8% REPEAT: 6 cm

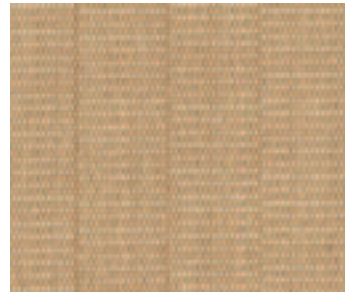


CANDLELIGHT



0990

UV: 99% G_{bot}: 14% REPEAT: 6 cm

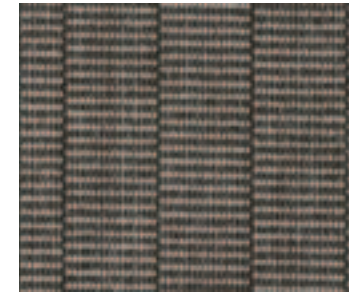


LANTERN

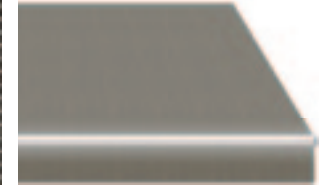


0991

UV: 99% G_{bot}: 14.2% REPEAT: 6 cm



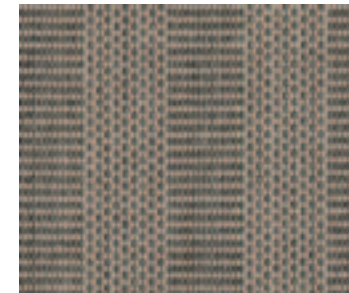
TIMBER



0992

UV: 99% G_{bot}: 9.6% REPEAT: 6 cm

LANDSCAPE MINI



SAND



4620

UV: 99% G_{bot}: 11.4% REPEAT: 2 cm

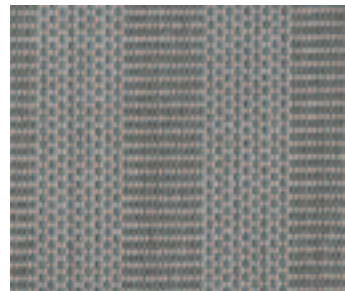


LAVA



4623

UV: 99% G_{bot}: 8.3% REPEAT: 2 cm



CLAY



4627

UV: 99% G_{bot}: 11.3% REPEAT: 2 cm



GRAVEL



4621

UV: 99% G_{bot}: 8.1% REPEAT: 2 cm

LANDSCAPE



BEACH



4662

UV: 99% G_{tot}: 16.37% REPEAT: 24 cm

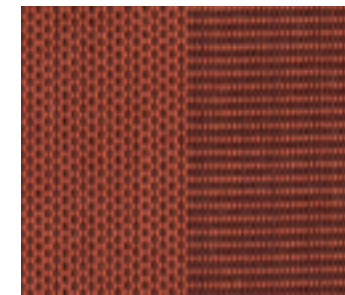


ROSOPSIDA

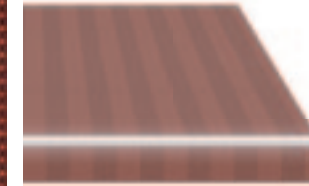


4657

UV: 99% G_{tot}: 14.96% REPEAT: 24 cm

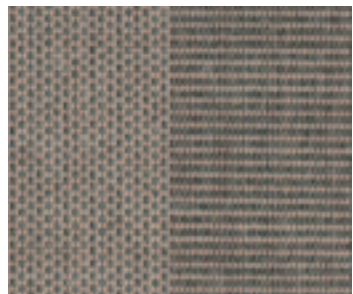


GOBI

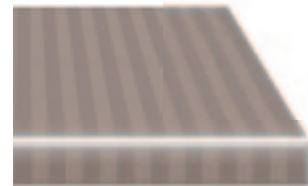


4658

UV: 99% G_{tot}: 11.32% REPEAT: 24 cm

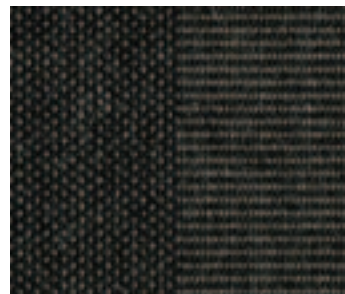


**SAHARA
DUST**

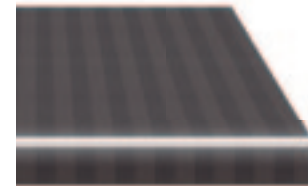


4639

UV: 99% G_{tot}: 10.18% REPEAT: 24 cm

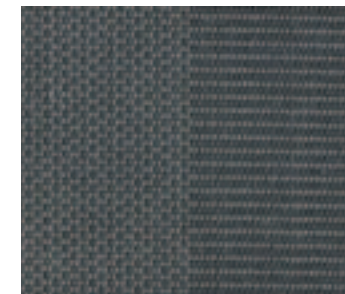


NAMIB

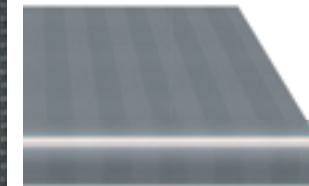


4640

UV: 99% G_{tot}: 5.04% REPEAT: 24 cm

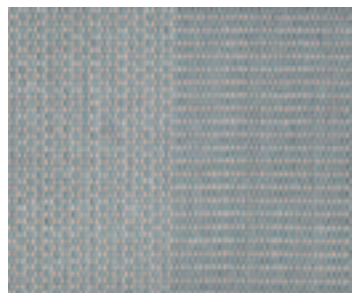


FJORD

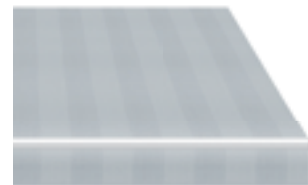


4644

UV: 99% G_{tot}: 7.8% REPEAT: 24 cm

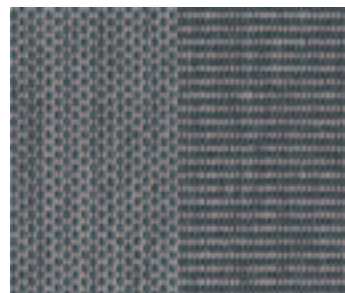


CLIFFS

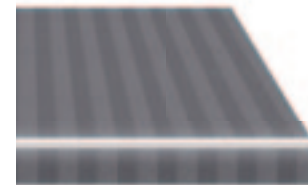


4643

UV: 99% G_{tot}: 6.78% REPEAT: 24 cm

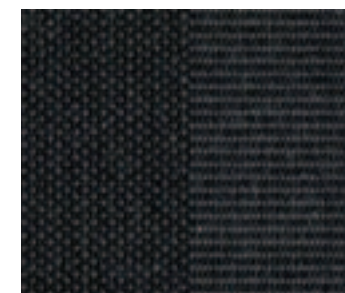


LADAKH



4655

UV: 99% G_{tot}: 5.91% REPEAT: 24 cm



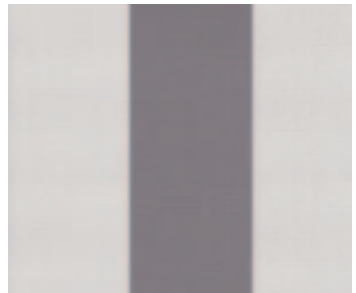
VULCANO



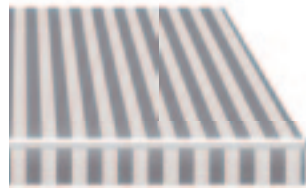
4665

UV: 99% G_{tot}: 5% REPEAT: 24 cm

CLASSICAL

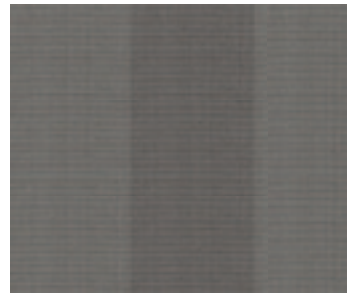


**CLASSICAL
GRIS**

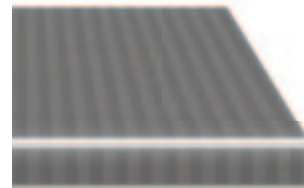


2103

UV: 97% G_{bot}: 16% REPEAT: 20 cm



**CLASSICAL
STONE TWEED**

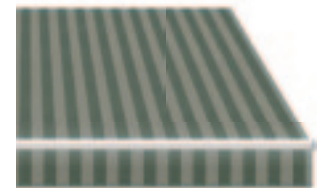


0597

UV: 98% G_{bot}: 12% REPEAT: 20 cm



**CLASSICAL
MOSSY TWEED**

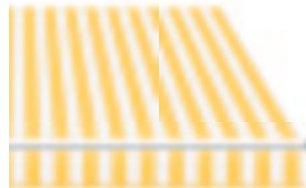


9878

UV: 98% G_{bot}: 15% REPEAT: 20 cm



**CLASSICAL
AMARILLO**

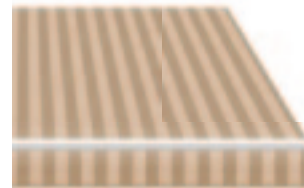


2015

UV: 97% G_{bot}: 15% REPEAT: 20 cm



**CLASSICAL
BEIGE**

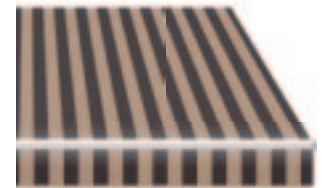


2275

UV: 98% G_{bot}: 14% REPEAT: 20 cm



**CLASSICAL
MARRON BEIGE**



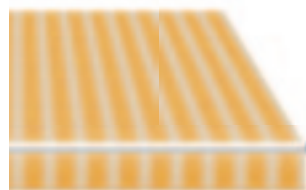
2148

UV: 99% G_{bot}: 9% REPEAT: 20 cm

FANTASY



MILANO



3868

UV: 95% G_{bot}: 22% REPEAT: 30 cm



CALGARY



6712

UV: 95% G_{bot}: 16% REPEAT: 30 cm



SUNRISE

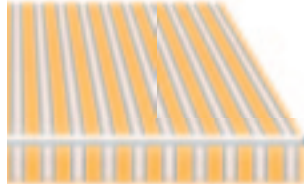


0180

UV: 99% G_{bot}: 14.73% REPEAT: 30 cm



PALERMO

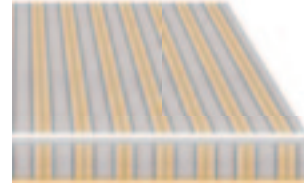


3605

UV: 90% G_{tot}: 21% REPEAT: 17 cm



ARGENTINA

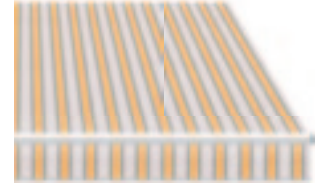


2016

UV: 98% G_{tot}: 15% REPEAT: 30 cm



TARANTO

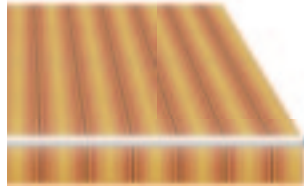


3672

UV: 95% G_{tot}: 21% REPEAT: 24 cm



CANBERRA

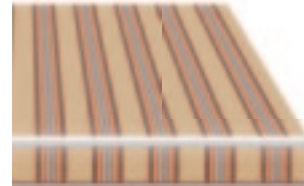


0452

UV: 99% G_{tot}: 15.51% REPEAT: 24 cm

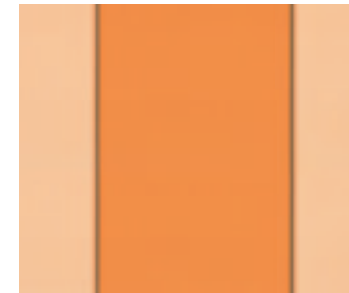


**LISBONNE
NATURE**

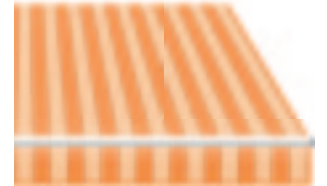


8224

UV: 95% G_{tot}: 13% REPEAT: 30 cm



DAKAR

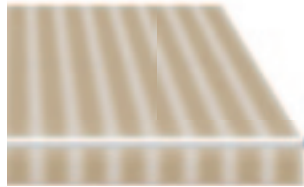


2080

UV: 98% G_{tot}: 15% REPEAT: 40 cm



SALERNO

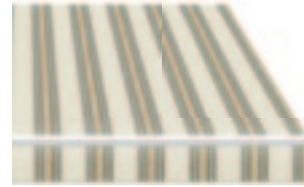


3861

UV: 90% G_{tot}: 20% REPEAT: 30 cm



ALBERTA

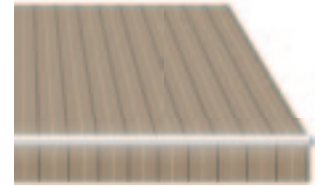


5106

UV: 98% G_{tot}: 15% REPEAT: 30 cm

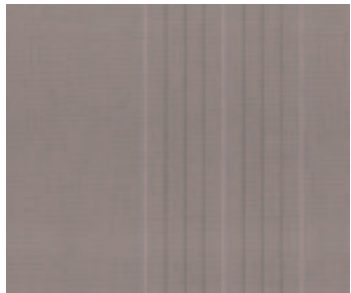


MANCHESTER



2823

UV: 98% G_{tot}: 8% REPEAT: 24 cm



SUNBURY

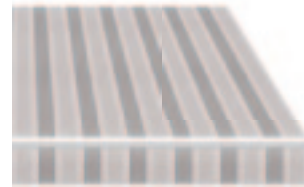


6106

UV: 98% G_{tot}: 10% REPEAT: 30 cm



**HARDELOT
NATURE**

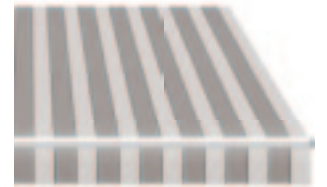


8935

UV: 95% G_{tot}: 14% REPEAT: 30 cm



**SIENNE
NATURE**

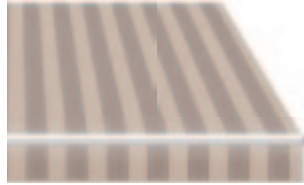


D100

UV: 95% G_{tot}: 14% REPEAT: 30 cm

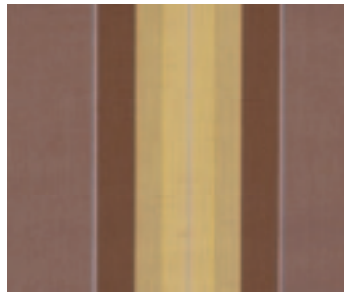


TEXAS



2238

UV: 98% G_{tot}: 13% REPEAT: 30 cm



PERU

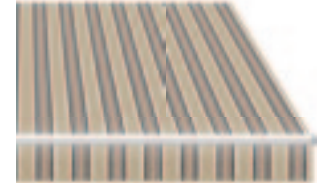


2201

UV: 98% G_{tot}: 14% REPEAT: 30 cm



ANDRIA

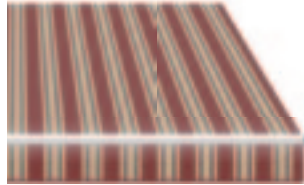


3881

UV: 95% G_{tot}: 18% REPEAT: 30 cm

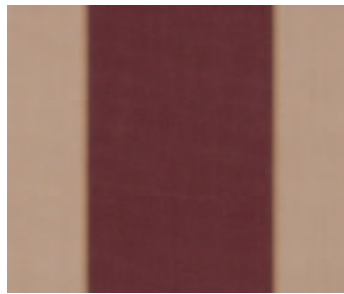


MARTE

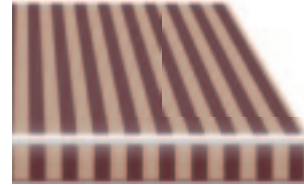


2121

UV: 99% G_{tot}: 11% REPEAT: 24 cm



BOLOGNA

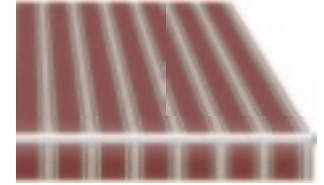


3427

UV: 90% G_{tot}: 22% REPEAT: 20 cm



JAMAICA

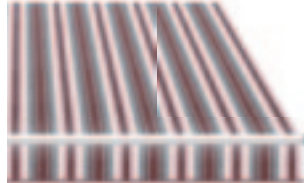


2701

UV: 98% G_{tot}: 14% REPEAT: 30 cm

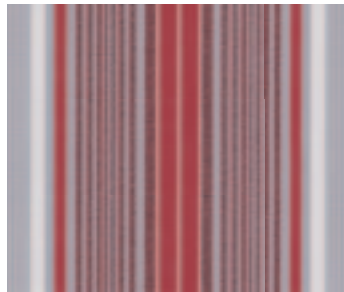


BRISBANE

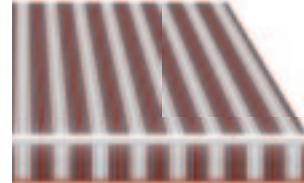


0186

UV: 98.1% G_{tot}: 10.26% REPEAT: 24 cm



EDMONTON

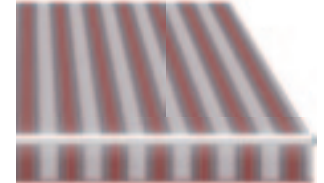


6711

UV: 98% G_{tot}: 13% REPEAT: 30 cm



**OSLO
FIRE**

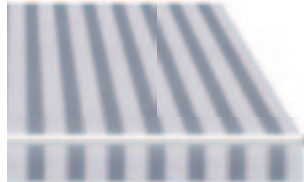


7351

UV: 95% G_{tot}: 14% REPEAT: 30 cm



WINTONE

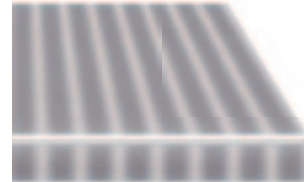


0734

UV: 98% G_{tot}: 12.39% REPEAT: 24 cm

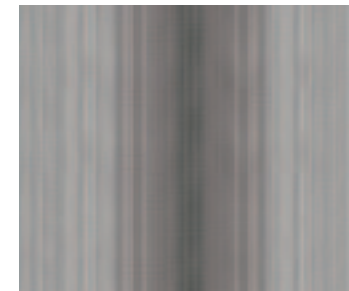


FOGGIA

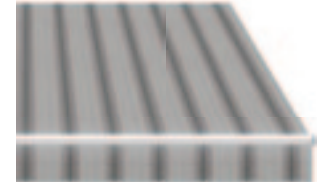


3864

UV: 95% G_{tot}: 18% REPEAT: 30 cm

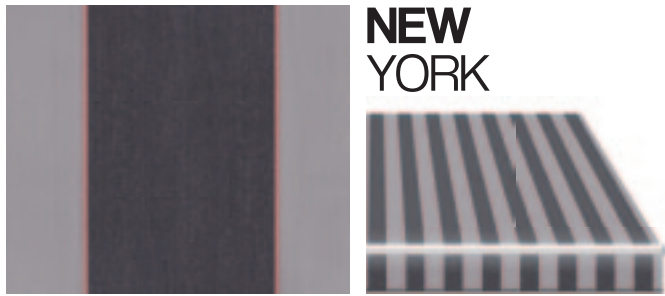


**BROKEN
HILL**



0497

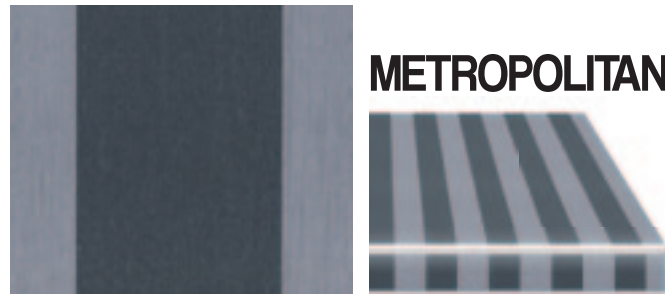
UV: 95% G_{tot}: 16% REPEAT: 30 cm



**NEW
YORK**

2174

UV: 98% G_{tot}: 14% REPEAT: 30 cm



METROPOLITAN

3608

UV: 99% G_{tot}: 7% REPEAT: 30 cm



GLADSTONE

0493

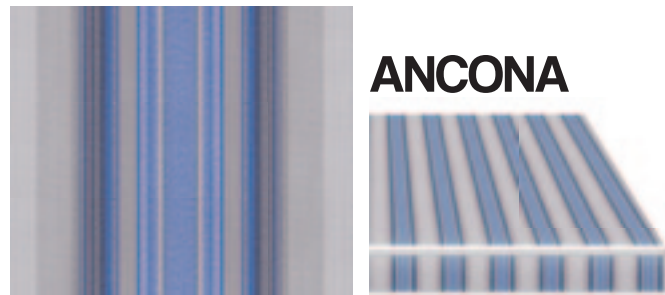
UV: 99% G_{tot}: 7.78% REPEAT: 24 cm



**SIENNE
STONE**

8931

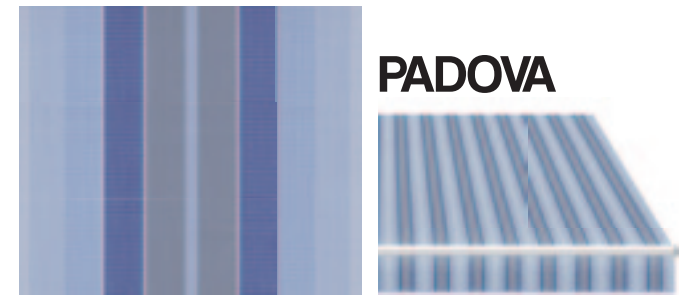
UV: 95% G_{tot}: 13% REPEAT: 30 cm



ANCONA

3746

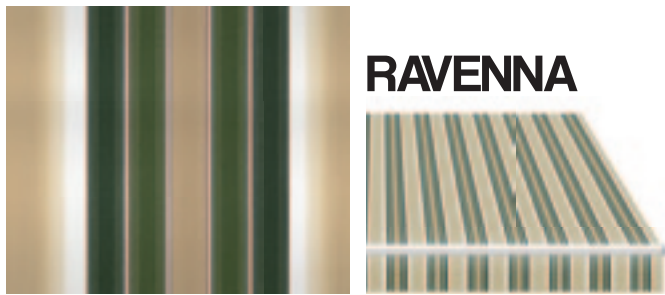
UV: 90% G_{tot}: 19% REPEAT: 24 cm



PADOVA

3875

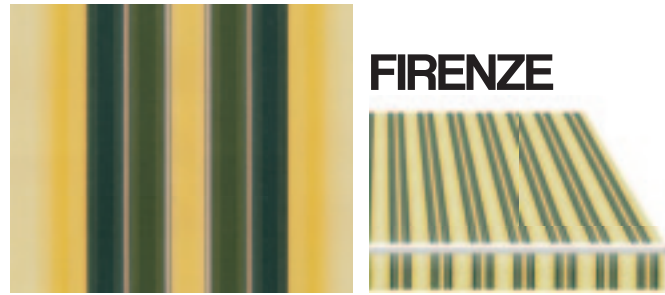
UV: 95% G_{tot}: 17% REPEAT: 30 cm



RAVENNA

3882

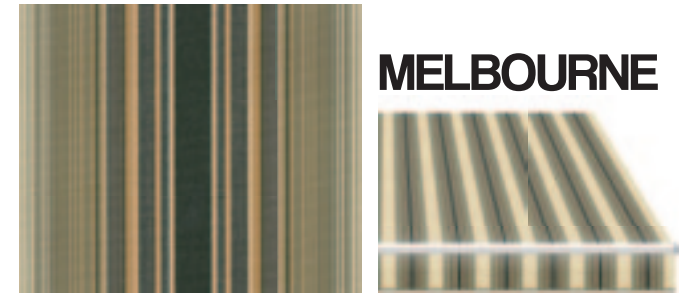
UV: 95% G_{tot}: 18% REPEAT: 30 cm



FIRENZE

3889

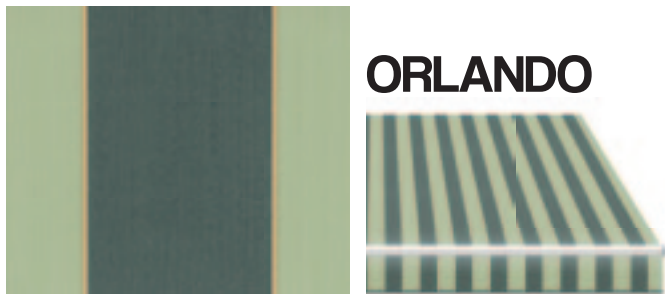
UV: 90% G_{tot}: 20% REPEAT: 30 cm



MELBOURNE

0054

UV: 99% G_{tot}: 11.74% REPEAT: 24 cm



ORLANDO

2191

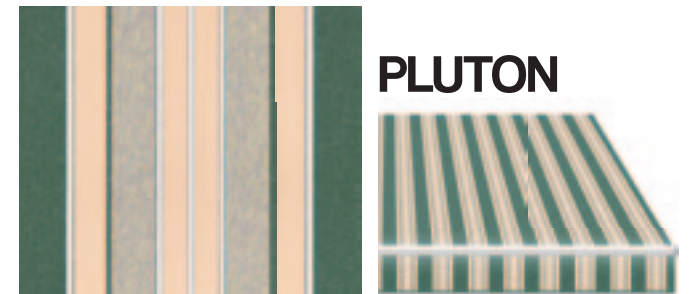
UV: 98% G_{tot}: 11% REPEAT: 30 cm



CANADA

2061

UV: 99% G_{tot}: 8% REPEAT: 30 cm



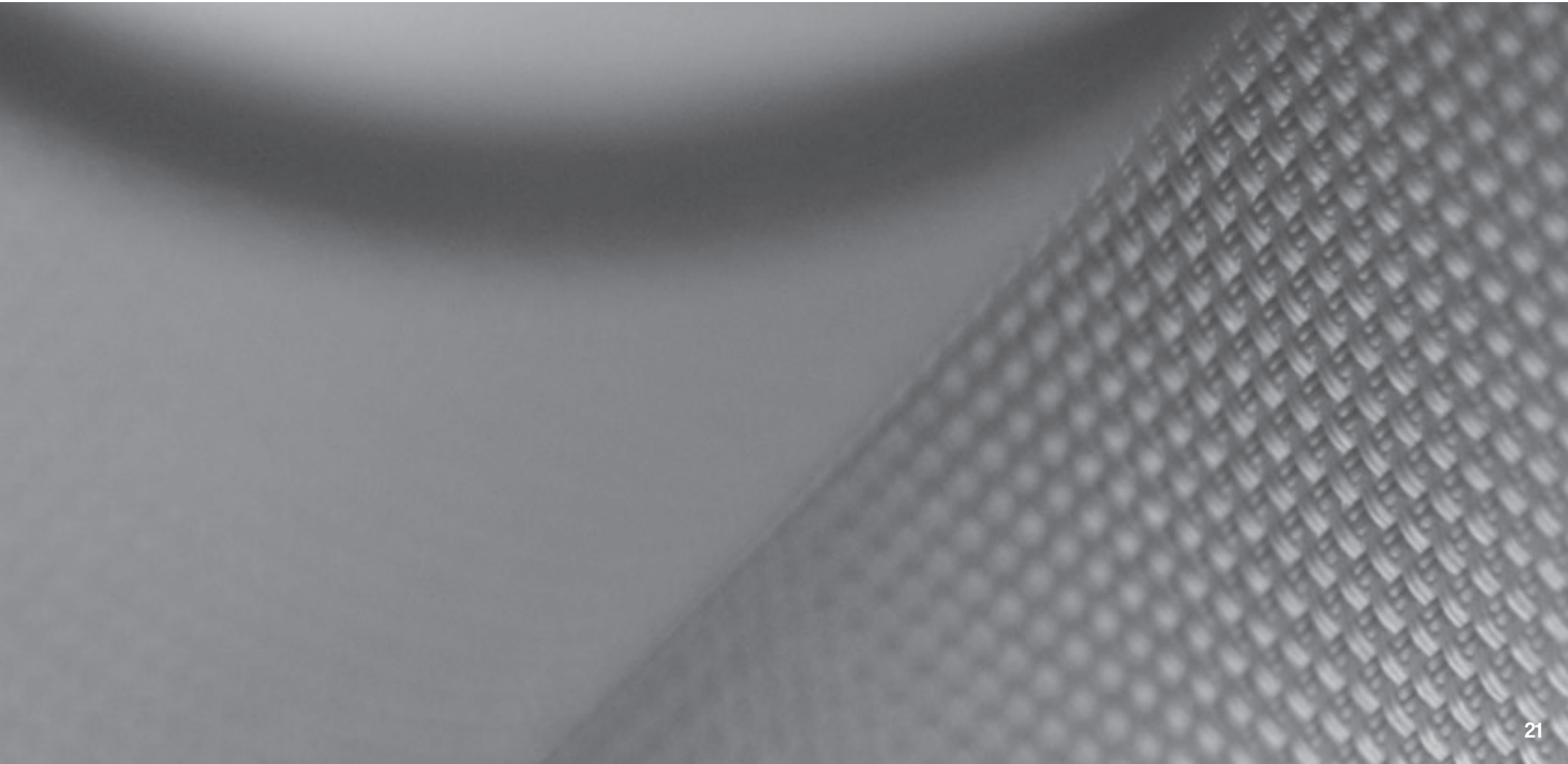
PLUTON

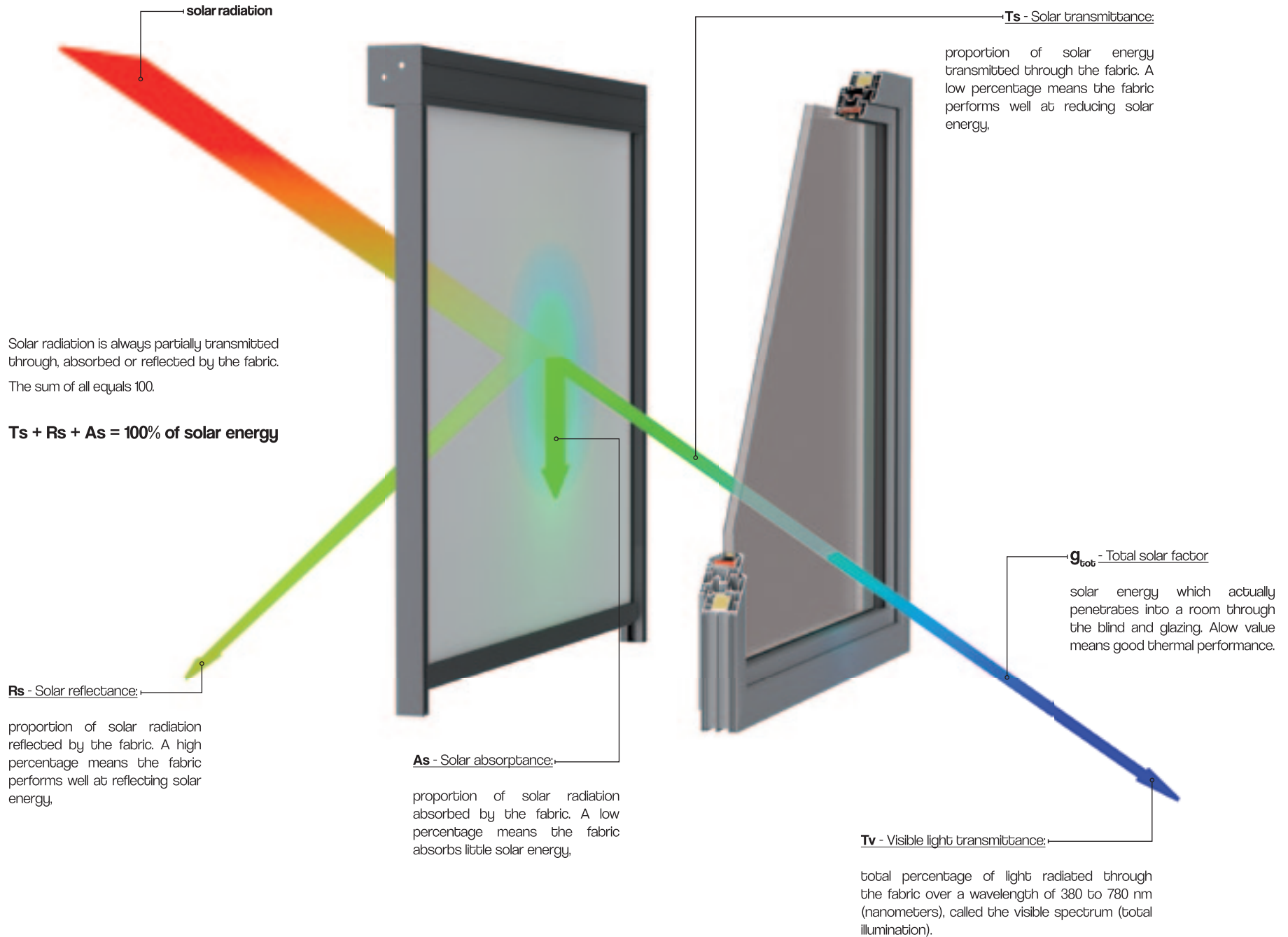
2179

UV: 99% G_{tot}: 10% REPEAT: 24 cm

Screen

fabrics







SOLTIS 92 / SOLTIS 99

SUNWORKER

POLYSCREEN

BLACK OUT

ACOUSTIC - VEROGLIM

SERGE 100 / SERGE 600

OPENNES FACTOR:

Relative area of the openings in the fabric. It is considered as independent of the colour. For fabric with the same weave, it should be measured using the darkest colour in the range

Polyester technical fabric coated with PVC, manufactured with patented technology Precontraint Ferrari®. The unique technology gives fabric high stability and protects it against deformations even in large size blinds. High technical parameters guarantee optical and thermal comfort. The quality components used in production of this fabric ensures color fastness. Thanks to the smooth surface, the fabric is difficult to absorb dirt or get stained.

Smooth polyester fabric finished with PVC. Unique structure of the fabric effectively stops the sunlight, allowing for just optimal amount of visible light to transmit inside the room, providing high comfort to its users. The advantages of this fabric are: color fastness, high resistance to weather conditions and easy to maintain clean.

Wide group of technical polyester fabrics coated with PVC, characterized by variety of weaving patterns and properties (PS Luminous, PS 550, PS 350). This allows architects to select the right solution, increasing visual attractiveness of the building and to emphasize its individual character. High technical parameters provide optical and thermal comfort inside the room. An additional feature of the fabric is the ease to keep it clean.

High-end blackout fabrics in group of Polyscreen 314 BO, effectively block sunlight coming into the room. It is ideal solution for conference rooms, audio-visual, photographic studios, etc. High dimensional stability, high technical parameters and interesting colours are without a doubt advantages of fabrics in this group.

Elegant fabric, made from the highest quality non-flammable polyester fibers Trevira® CS, intended for indoor use. Because of its weight, the fabric is ideally suited for cassette systems. An important advantage of this fabric is high coefficient of acoustics. Thanks to its structure, the fabric absorbs sound and mutes the room. Another advantage is metallic surface that reflects bright light and in this way regulates its intensity in the room.

Collection of fabrics made from fiberglass covered with PVC. Fabrics made of this group have a distinctive diagonal „serge” weave, which guarantees them an unusual dimensional stability. High fire resistance and very good technical parameters of fabrics provide users with visual comfort in rooms, thus protecting against overheating the interior.

The pictures are presented for illustration purpose only, differences in tones are permissible. Any difference in tone does not constitute grounds for complaint.

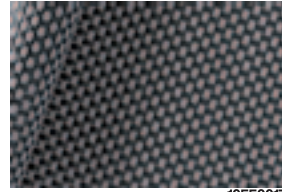
	composition	weight [g/m ²]	thickness [mm]	light fastness blue scale level EN ISO 105 E02	light fastness grey scale level EN ISO 4892	openness factor [%]	internal method				application		
							TS [%]	RS [%]	AS [%]	TV [%]			
Ash (Ebony Grey)	85% PVC + 15% PES	610 ± 5%	078 ± 5%	8 / 8	5 / 5	5	6	7	87	6	interior / exterior		
Pearl-Grey							11	29	60	9			
White-Grey							13	37	50	13			
White-Pearl							16	57	27	12			
Pearl-Sand							13	37	50	10			
Pearl-Linen							17	46	37	13			
White-Linen							20	63	17	16			
White							7 / 8	4 / 5	19	69		12	15

Tearing resistance (daN) UNE EN ISO 13937-3:2001 - Warp: 6.6, Weft: 5.3
 Breaking strength (daN/5cm) UNE EN ISO 13934-1:1999 - Warp: 174, Weft: 133
 Stretch (%) UNE EN ISO 13934-1:1999 - Warp: 22%, Weft: 21%
 Flame retardant - certificate on request



POLYSCREEN® 550

ASH (EBONY GREY)



10550017

PEARL GREY



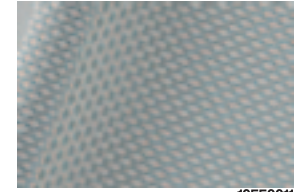
10550013

WHITE GREY



10550012

WHITE PEARL



10550011

PEARL SAND



10550023

PEARL LINEN



10550021

WHITE LINEN



10550019

WHITE



10550009

	composition	weight [g/m ²]	thickness [mm]	light fastness blue scale level EN ISO 105 E02	light fastness grey scale level EN ISO 4892	openness factor [%]	internal method				application
							TS [%]	RS [%]	AS [%]	TV [%]	
Gold-Ebony	85% PVC + 15% PES	610 ± 5%	078	8 / 8	5 / 5	5	11	8	81	10	interior / exterior
Gold-Crystal							18	17	65	22	
Gold-Linen							13	25	62	14	

Tearing resistance (daN) UNE EN ISO 13937-3:2001 - Warp: 6.6, Weft: 5.3
 Breaking strength (daN/5cm) UNE EN ISO 13934-1:1999 - Warp: 174, Weft: 133
 Stretch (%) UNE EN ISO 13934-1:1999 - Warp: 22%, Weft: 21%
 Flame retardant - certificate on request



POLYSCREEN® 550 GOLD

GOLD EBONY



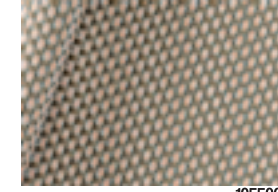
10550051

GOLD CRYSTAL



10550052

GOLD LINEN



10550053

	composition	weight [g/m ²]	thickness [mm]	light fastness blue scale level EN ISO 105 E02	light fastness grey scale level EN ISO 4892	openness factor [%]	internal method				application
							TS [%]	RS [%]	AS [%]	TV [%]	
Silver-Bronze	85% PVC + 15% PES	610 ± 5%	078	8 / 8	5 / 5	5	17	14	69	17	interior / exterior
Silver-Grey							16	17	67	17	
Silver-Silver							21	23	56	22	

Tearing resistance (daN) UNE EN ISO 13937-3:2001 - Warp: 6.6, Weft: 5.3
 Breaking strength (daN/5cm) UNE EN ISO 13934-1:1999 - Warp: 174, Weft: 133
 Stretch (%) UNE EN ISO 13934-1:1999 - Warp: 22%, Weft: 21%
 Flame retardant - certificate on request



POLYSCREEN® 550 SILVER

SILVER BRONZE



10550041

SILVER GREY



10550042

SILVER SILVER



10550043

	composition	weight [g/m ²]	thickness [mm]	light fastness blue scale level EN ISO 105 B02	light fastness grey scale level EN ISO 4892	openness factor [%]	internal method				application
							TS [%]	RS [%]	AS [%]	TV [%]	
Ash (Ebony Grey)	80% PVC + 20% PES	400 ± 5%	0,53 ± 5%	8 / 8	5 / 5	10	10	8	82	10	interior / exterior
Pearl-Grey							16	26	58	14	
White-Linen							27	58	15	23	
White							25	64	11	22	

Tearing resistance (daN) UNE EN ISO 13937-3:2001 - Warp: 4,8, Weft: 5,2
 Breaking strength (daN/5cm) UNE EN ISO 13934-1:1999 - Warp: 145, Weft: 127
 Stretch (%) UNE EN ISO 13934-1:1999 - Warp: 21%, Weft: 23%
 Flame retardant - certificate on request



POLYSCREEN® 350

ASH (EBONY GREY)



10350017

PEARL GREY



10350013

WHITE LINEN



10350019

WHITE



10350009

	composition	weight [g/m ²]	thickness [mm]	light fastness blue scale level EN ISO 105 B02	light fastness grey scale level EN ISO 4892	openness factor [%]	internal method				application	
							TS [%]	RS [%]	AS [%]	TV [%]		
Arizona	85% PVC + 15% PES	511 ± 5%	0,78	8 / 8	5 / 5	13	13	15	10	75	16	interior / exterior
Sahara A							6	10	15	75	11	
Sahara B							6	10	12	78	10	
Kalahari							7	23	23	54	23	
Atacama							10	20	14	66	22	
Mojave							11	14	8	78	14	

Tearing resistance (daN) UNE EN ISO 13937-3:2001 - Warp: 5,4, Weft: 6,4
 Breaking strength (daN/5cm) UNE EN ISO 13934-1:1999 - Warp: 110,3, Weft: 100,9
 Stretch (%) UNE EN ISO 13934-1:1999 - Warp: 23,2%, Weft: 20%
 Flame retardant - certificate on request



POLYSCREEN® LUMINOUS

ARIZONA



10550061

SAHARA A



10550063

SAHARA B



10550062

KALAHARI



10550064

ATACAMA



10550065

MOJAVE



10550066

	composition	weight [g/m ²]	thickness [mm]	light fastness blue scale level EN ISO 105 B02	light fastness grey scale level EN ISO 4892	openness factor [%]	internal method				application
							TS [%]	RS [%]	AS [%]	TV [%]	
Coupage 1	85% PVC + 15% PES	610 ± 5%	0,78	8 / 8	5 / 5	5	10	8	82	10	interior / exterior
Coupage 2							12	13	75	12	
Coupage 3							20	21	59	19	
Coupage 4							17	16	67	17	

Tearing resistance (daN) UNE EN ISO 13937-3:2001 - Warp: 6,6, Weft: 5,3
 Breaking strength (daN/5cm) UNE EN ISO 13934-1:1999 - Warp: 174, Weft: 133
 Stretch (%) UNE EN ISO 13934-1:1999 - Warp: 22%, Weft: 21%
 Flame retardant - certificate on request



POLYSCREEN® 550 COUPAGE

COUPAGE 1



10550031

COUPAGE 2



10550032

COUPAGE 3



10550033

COUPAGE 4



10550034

	composition	weight [g/m ²]	thickness [mm]	light fastness blue scale level EN ISO 105 B02	light fastness grey scale level EN ISO 4892	openness fac- tor [%]	EN 14501				application
							TS [%]	FS [%]	AS [%]	TV [%]	
Ebony Grey	80% PVC + 20% PES coated with PVC	610 ± 5%	0,66 ± 5%	8 / 8	4 / 5	0	0	36	64	0	interior / exterior
Ebony Linen											
Linen Bronze											
Linen Sand											
Ebony Sand											

Tearing resistance (daN) UNE EN ISO 13937-3:2001 - Warp: 4.4, Weft: 2.5
 Breaking strength (daN/5cm) UNE EN ISO 13934-1:1999 - Warp: 147, Weft: 91
 Stretch (%) UNE EN ISO 13934-1:1999 - Warp: 26.7%, Weft: 17.6%
 Flame retardant - certificate on request



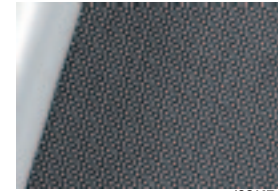
POLYSCREEN® 314
BLACK OUT

EBONY GREY



10314B20

EBONY LINEN



10314B08

LINEN BRONZE



10314B06

LINEN SAND



10314B04

EBONY SAND



10314B10

	composition	weight [g/m ²]	thickness [mm]	light fastness blue scale level EN ISO 105 B02	openness factor [%]	EN 14501				application
						TS [%]	FS [%]	AS [%]	TV [%]	
White-White 02002	42% glassfibre + 58% pvc	535	0,55	>7	5	21/21	65.9/66.3	13.2/12.7	21.2/21.2	interior / exterior
Grey-White 01002						6.7/6.7	37.2/26.9	56.2/66.4	6.6/6.6	
Pearl-Grey 07007						10.1/10.1	38.3/39.4	51.7/50.5	8.4/8.4	
Grey-Grey 01001						3.5/3.5	15.1/15.1	81.3/81.4	3.6/3.6	
Grey-Charcoal 01010						3.6/3.6	9.9/12.6	86.5/83.8	3.6/3.6	
Charcoal-Charcoal 10010						3.6/3.6	50/4.8	91.4/91.6	3.6/3.6	

Tearing resistance (daN) UNE EN ISO 4674-1 method 2 - Warp: 8.5, Weft: 7.5
 Breaking strength (daN/5cm) UNE EN ISO 1421 - Warp: 260, Weft: 225
 Flame retardant - certificate on request



SERGE 600

WHITE WHITE



60002002

GREY WHITE



60001002

PEARL GREY



60007007

GREY GREY



60001001

GREY CHARCOAL



60001010

CHARCOAL CHARCOAL



60010010

	composition	weight [g/m ²]	thickness [mm]	light fastness blue scale level EN ISO 105 B02	openness factor [%]	EN 14501				application
						TS [%]	FS [%]	AS [%]	TV [%]	
White-White 02002	42% glassfibre + 58% pvc	620	0,8	>7	1	12.8	71.3	15.9	12.9	interior / exterior
Grey-White 01002						2.2	44.8 / 31.2	53 / 66.6	2	
Pearl-Grey 07007						2.8	36.9	60.3	2.1	
Grey-Grey 01001						2.4	17.4	80.2	2.2	
Grey-Charcoal 01010						1.2	10.5 / 14	88.3 / 84.8	1.2	
Charcoal-Charcoal 10010						1.1	5.9	93	1.1	

Tearing resistance (daN) UNE EN ISO 4674-1 method 2 - Warp: 5.9, Weft: 6.2
 Breaking strength (daN/5cm) UNE EN ISO 1421 - Warp: 321, Weft: 277
 Flame retardant - certificate on request



SERGE 1%

WHITE WHITE



61002002

GREY WHITE



61001002

PEARL GREY



61007007

GREY GREY



61001001

GREY CHARCOAL



61001010

CHARCOAL CHARCOAL



61010010

	composition	weight [g/m ²]	thickness [mm]	light fastness blue scale level EN ISO 105 B02	light fastness grey scale level EN ISO 105 B04	openness factor [%]	EN 14501				application
							TS [%]	RS [%]	AS [%]	TV [%]	
White SWK005	Polyester / PVC	320	0.42	6 / 8	3-4 / 5	6	23	66	11	21	interior / exterior
Iron SWK653							12	35	53	10	
Champagne SWK711							21	50	29	18	
Charcoal SWK392							6	7	87	6	

Tearing strength (daN/5cm) DIN 53.363 - Warp: 43, Weft: 22
Tensile strength (daN/5cm) NF EN ISO 13934-1 - Warp: 220, Weft: 150
Flame retardant - certificate on request



SYSTEM
LOWICK



SUNWORKER

WHITE



40SWK005

IRON



40SWK653

CHAMPAGNE



40SWK711

CHARCOAL



40SWK392

	composition	weight [g/m ²]	thickness [mm]	light fastness grey scale level EN ISO 105 B04	openness factor [%]	EN 14501				application	
						TS [%]	RS [%]	AS [%]	TV [%]		
Charcoal 2047	Polyester / PVC	420	0.45	5 / 5	4	5	8	87	5	interior / exterior	
Concrete 2167						3	19	78	3		
Glossy 2065						4 / 5	10	46	44		7
Silver 2048						2 / 5	8	46	46		8
Silver-Black 2045						5 / 5	3	35	62		3
Silver-White 2051						4 / 5, 3 / 5	10 / 9	50 / 70	40 / 21		10 / 9
Sandy Beige 2135						5 / 5	9	46	45		6
White 2044						2 / 5	20	70	10		19

Tear strength (daN) DIN 53.363 - Warp: 45, Weft: 20
Tensile strength (daN/5cm) EN ISO 1421 - Warp: 310, Weft: 210
Flame retardant - certificate on request



SOLITS® 92

CHARCOAL



50922047

CONCRETE



50922167

GLOSSY



50922065

SILVER



50922048

SILVER BLACK



50922045

SILVER WHITE



50922051

SANDY BEIGE



50922135

WHITE



50922044

	composition	weight [g/m ²]	thickness [mm]	light fastness grey scale level EN ISO 105 B04	openness factor [%]	EN 14501				application
						TS [%]	RS [%]	AS [%]	TV [%]	
White 2055	Polyester / PVC	290	0.32	4 / 5, 4 / 5	3	9 / 9	50 / 69	41 / 22	8	interior
Quartz 50285						9 / 9	47 / 60	44 / 31	8	
Sandy Beige 50286						7 / 7	44 / 45	49 / 48	6	
Spume 50284						9 / 9	48 / 63	43 / 28	7	
Light Grey 2058						7 / 7	47 / 45	46 / 48	6	
Alu 2059						4	47	49	3	
Antracite 2068						3 / 3	36 / 9	61 / 88	2	

Tear strength (daN) DIN 53.363 - Warp: 11, Weft: 13
Tensile strength (daN/5cm) EN ISO 1421 - Warp: 160, Weft: 170
Flame retardant - certificate on request



SOLITS® 99

WHITE



50992055

QUARTZ



509950285

SANDY BEIGE



509950286

SPUME



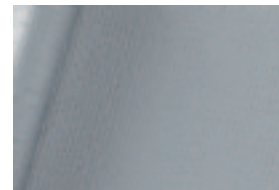
509950284

LIGHT GREY



50992058

ALU



50992059

ANTRACITE



50992068

	composition	weight [g/m ²]	thickness [mm]	light fastness blue scale level EN ISO 105 B02	openness factor [%]	DIN EN 410				application
						TS [%]	FS [%]	AS [%]	TV [%]	
Grey-Silver 115	Trevira CS	220	0.43	5-6 / 8	1	5	50	45	2	Interior
Light Grey-Silver 114						5	52	43	4	
White-Silver 111						7	52	41	7	
Ivory-Silver 113						6	49	45	6	

Flame retardant - certificate on request



$\alpha_w = 60\%$



VEROGLIM
ACOUSTIC

GREY SILVER



34022115

LIGHT GREY SILVER



34022114

WHITE SILVER



34022111

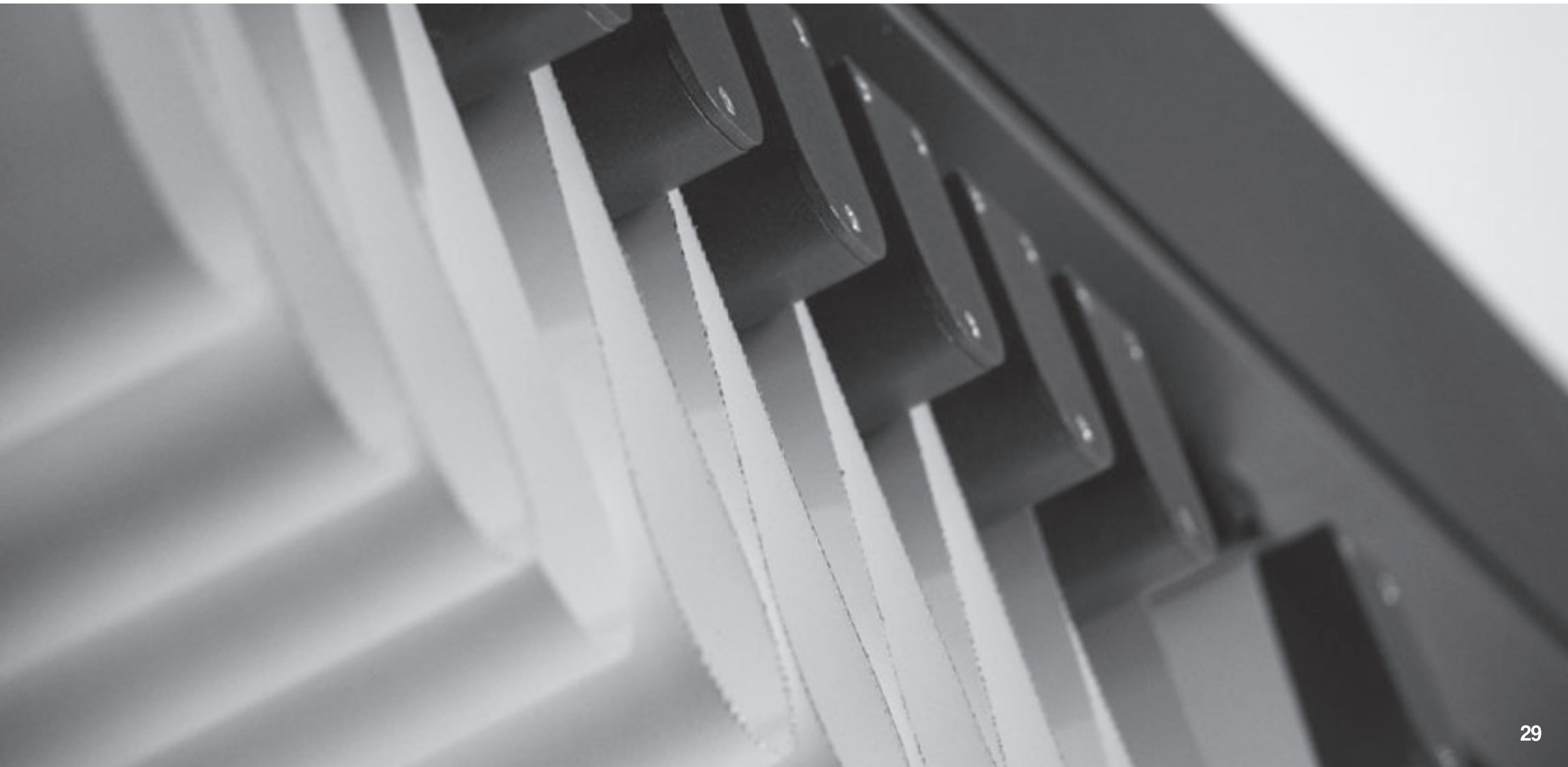
IVORY SILVER



34022113

pergola Solid

fabrics



pergola
Solid
 fabrics

Precontraint 602 Opaque

Technical specifications

	Values	Standards
Yarn	1100 dtex PES HT	Tersuisse
Weight	750 g/m ²	EN ISO 2286-2
Width	267 cm	-
Tensile strength (warp/weft)	230/220 daN/5cm	EN ISO 1421
Tear strength (warp/weft)	20/20 daN	DIN 53.363
Elongation under load (warp/weft)	<1%/<1%	NF EN 15619
Adhesion	9/9 daN/5cm	EN ISO 2411
Finish	Varnish both sides	-
Flame retardancy	• M2/NFP 92-507 • B1/DIN4102-1 • M2/UNE23.727-90 • BS 7837 • 1530.3/AS NZS • Method 2/NFPA 701 • CSFM T19 •	
Cold resistance	-30°C	ISO 4675
Heat resistance	+70°C	

BLANC
 602N Opaque
 8503

BEIGE
 602N Opaque
 0020

Precontraint 702 Opaque

Technical specifications

	Values	Standards
Yarn	1100 dtex PES HT	Tersuisse
Weight	830 g/m ²	EN ISO 2286-2
Width	267 cm	
Tensile strength (warp/weft)	280/280 daN/5 cm	EN ISO 1421
Tear strength (warp/weft)	30/28 daN	DIN 53.363
Adhesion	10/10 daN/5 cm	EN ISO 2411
Finish	Acrylic varnish both sides Aluminium face / Back grey	
Flame retardancy	M2/NFP 92-507 • TEST 2/NFPA 701 • CSFM T19 • B1/DIN 4102-1 • BS 7837 • GROUP 1/AS/NZS 3837 • 1530.3/AS/NZS • SITAC/SIS 650082 • Schwerbrennbar Q1-Tr1 /ONORM A 3800-1 • CLASSE 2/UNI 9177-87 • M2/UNE 23.727-90 • VKF 5.2/SN 198898 • B-s2,do/EN 13501-1	
Cold resistance	-30°C	
Heat resistance	+70°C	

ALU GREY
 702 Opaque
 1285

pergola Solid

fabrics

Expansion

Technical specifications

	Values	Standards
Composition	Composite of 75% Mass dyed Acrylic + 25% PVC transparent membrane	
Weight	420 g/m ²	ISO 3801
Width	300 cm	EN 1773
Thickness	0.6 mm	ISO 2286-3
Tensile strength (warp/weft)	140/115 daN	ISO 13934-1
Elongation at break (warp/weft)	28/15 %	ISO 13934-1
Adhesion	2.6/21 daN/5 cm	ISO 2411
Resistance to water penetration (Schmerber)	>10000 mm	ISO 811
Resistance to surface wetting (spray test)	class 5 / 5	ISO 4920
Oil repellency	class 4 / 8	ISO 14419
Oil repellency (membrane side)	class 5 / 8	ISO 14419
Finish	Cleanguard Treatment anti stain and waterproof	
Colour fastness UV - outdoor	class 4 / 5	ISO 105 B04

PUTTY
U334

CLAY
U335

ROPE
U336

LINE DOVE
D249 / Repeat: 26 cm

INK
U343

SLATE
U341

SILVER
U333

LINE CHARCOAL
D250 / Repeat: 26 cm

FABRICS CATALOGUE

All specifications, design and color of products are up to date at time of forwarding this catalogue to print.
The manufacturer reserves the right to make changes without prior notice.
Due to the printing process any color reproductions are for illustration purposes only,
their deviation from the actual color cannot constitute grounds for complaint.
Folder reproduction in whole or in part is forbidden without the written permission of SELT.

www.selt.com